



Two Bedroom Flat with a 25ft Open Plan Living Space a Private Terrace, Shared Rear Gardens & Open Aspect Views! This ground floor flat is ideally located on Greystoke Gardens, Sandyford.

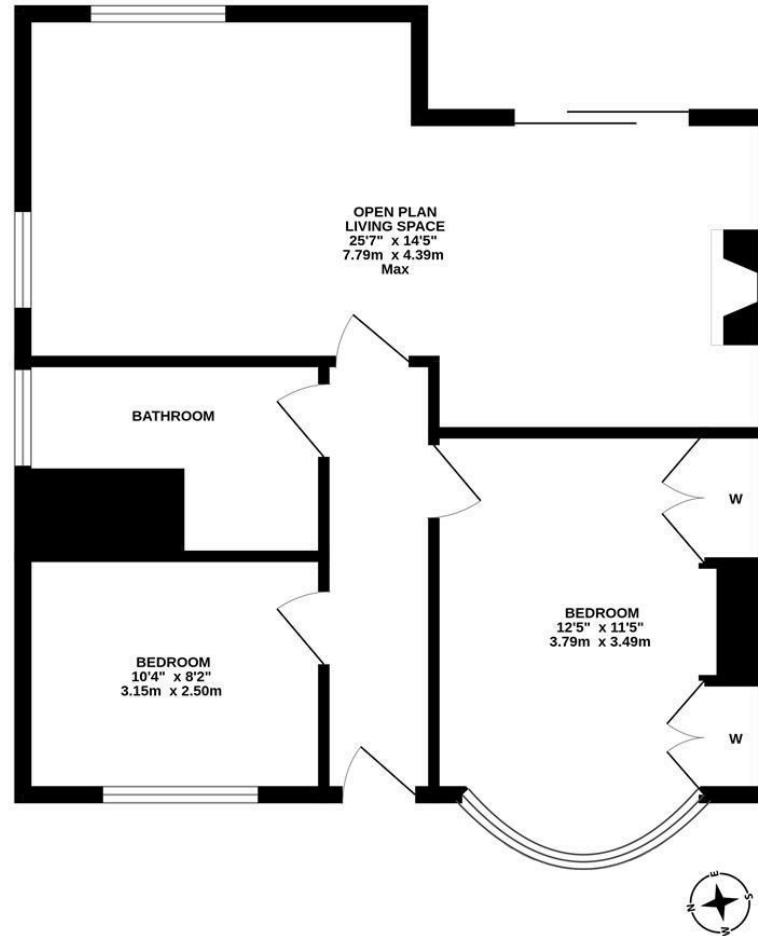
Greystoke Gardens, positioned within striking distance to Jesmond Dene, local shops, cafes and restaurants within Sandyford itself and also within close proximity to both Heaton and Newcastle City Centre.

The accommodation briefly comprises: entrance hall; 25ft open plan living space with feature fireplace, dual aspect windows together with sliding door access to the private decked terrace, kitchen area with a range of fitted units, work surfaces and spot lighting; bathroom complete with three piece suite; two bedrooms, bedroom one with walk in bay and fitted alcove storage. Externally, a private decked terrace with steps leading down to a generous, lawned garden, shared with fenced boundaries. Early viewings are advised!

Ground Floor Flat | 626 Sq ft (58.2) | Two Bedrooms | 25ft Open Plan Living Space | Bathroom | Private Terrace & Shared Garden | Popular Location | Leasehold - Tyneside Lease with Peppercorn Rent - 979 Years Remaining | Council Tax Band A | EPC: D

EPC: D

GROUND FLOOR
626 sq.ft. (58.2 sq.m.) approx.



TOTAL FLOOR AREA : 626 sq.ft. (58.2 sq.m.) approx.
Whilst every attempt has been made to ensure the accuracy of the floorplan contained here, measurements of doors, windows, rooms and any other items are approximate and no responsibility is taken for any error, omission or mis-statement. This plan is for illustrative purposes only and should be used as such by any prospective purchaser. The services, systems and appliances shown have not been tested and no guarantee as to their operability or efficiency can be given.
Made with Metropix ©2026



Offers Over £175,000

IMPORTANT NOTE: These particulars and the descriptions and measurements herein do not constitute representation and whilst every effort has been made to ensure accuracy, this cannot be guaranteed.

